

WILSHIRE UNION PLAZA

GROUND FLOOR RETAIL/RESTAURANT SPACE AVAILABLE



 **Newmark Grubb
Knight Frank**

WWW.JAYLUCHS.COM

JAY LUCHS
EXECUTIVE VICE PRESIDENT
CA RE LIC #01260345
T: 310.407.6585
Jay.Luchs@ngkf.com

GAVIN KETCHUM
ASSOCIATE
CA RE LIC #01929170
T: 310.407.6593
Gavin.Ketchum@ngkf.com

WILSHIRE UNION PLAZA



UNIQUE RETAIL OPPORTUNITY TO SERVICE WILSHIRE UNION PLAZA

PREMISE

1541 Wilshire Blvd.
Suite 101

SIZE

1,036 SF

RENT

Available upon request

PARKING

Dedicated customer parking

HIGHLIGHTS

- Light food use
- Indoor/outdoor concept
- Approximately 260,000sf of offices in direct proximity

NEIGHBORING TENANTS

- Starbucks
- Pacific Dining Car
- Good Samaritan Hospital
- Plan Check Kitchen + Bar
- Esperanza Elementary School
- John H Liechty Middle School

 **Newmark Grubb
Knight Frank**

WWW.JAYLUCHS.COM

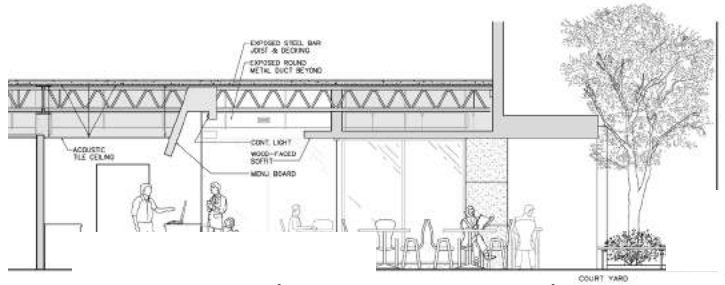
JAY LUCHS

EXECUTIVE VICE PRESIDENT
CA RE LIC #01260345
T: 310.407.6585
Jay.Luchs@ngkf.com

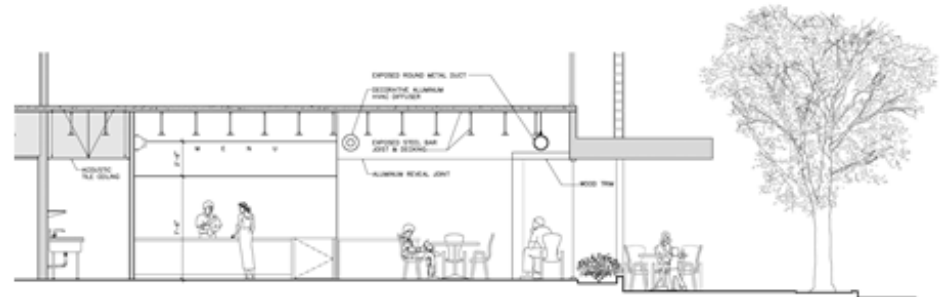
GAVIN KETCHUM

ASSOCIATE
CA RE LIC #01929170
T: 310.407.6593
Gavin.Ketchum@ngkf.com

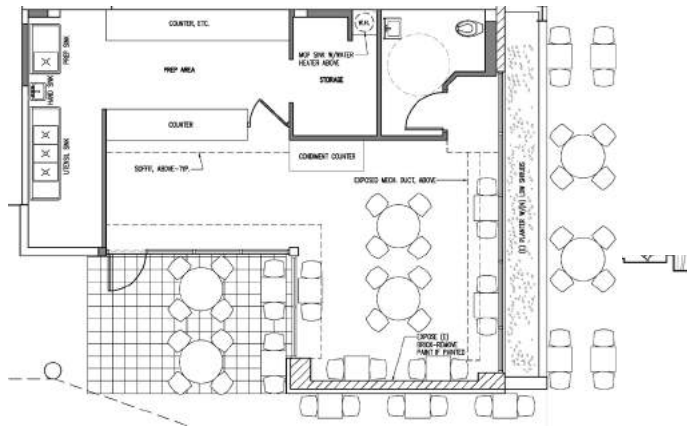
WILSHIRE UNION PLAZA



VIEW FACING SOUTH (CONCEPTUAL DRAWING)



VIEW FACING EAST (CONCEPTUAL DRAWING)



**Newmark Grubb
Knight Frank**

WWW.JAYLUCHS.COM

JAY LUCHS
EXECUTIVE VICE PRESIDENT
CA RE LIC #01260345
T: 310.407.6585
Jay.Luchs@ngkf.com

GAVIN KETCHUM
ASSOCIATE
CA RE LIC #01929170
T: 310.407.6593
Gavin.Ketchum@ngkf.com