

SANTA MONICA & HIGHLAND HOLLYWOOD, CA 90038



For Lease
310 407 6585
Jay Luchs
Lic. 01260345
www.jayluchs.com
Newmark
Knight Frank



WWW.JAYLUCBS.COM

JAY LUCHS
VICE CHAIRMAN
310.407.6585
JAY.LUCBS@NGKF.COM
CA RE LIC: 01260345

GENNY CHANG
DIRECTOR
310.407.6588
GENNY.CHANG@NGKF.COM
CA RE LIC: 01467375

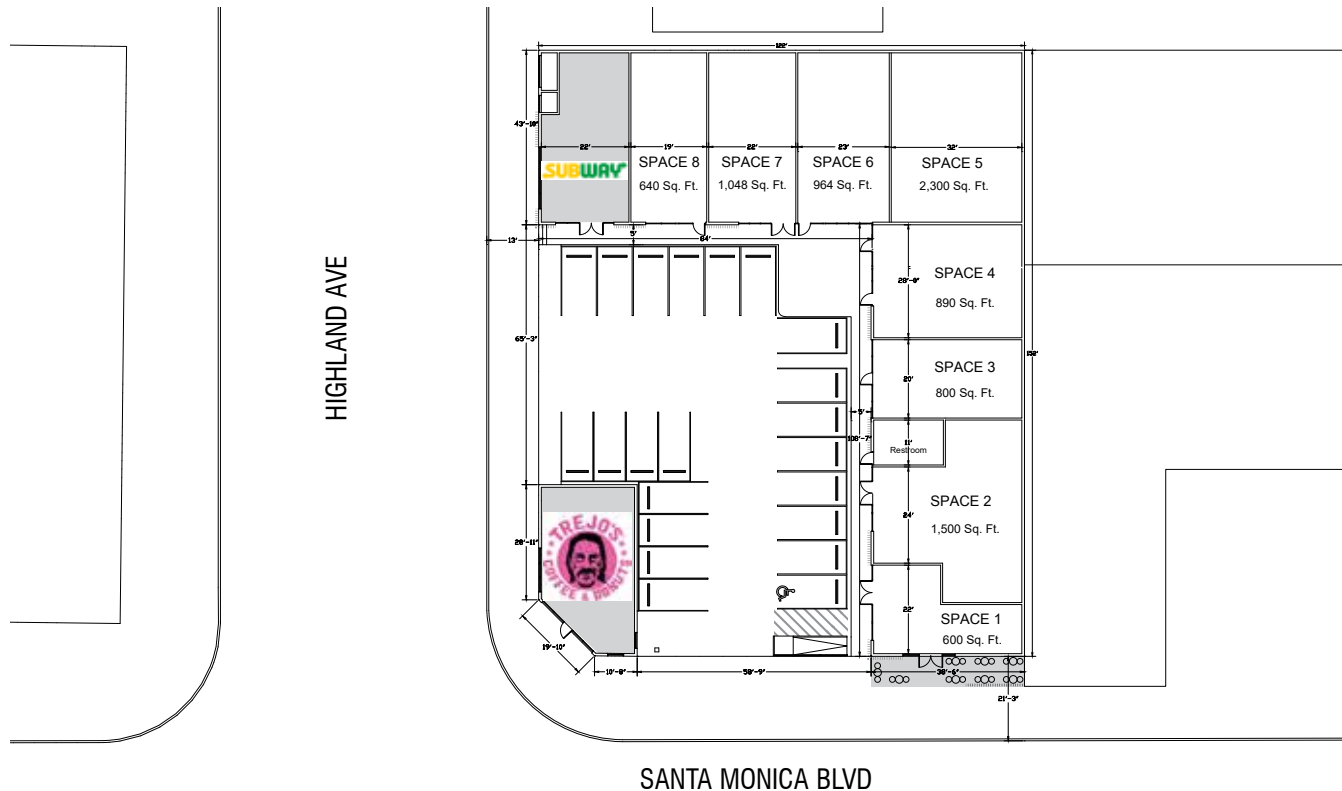
PROPERTY OVERVIEW

HIGHLIGHTS

- RETAIL / RESTAURANT / FITNESS OPPORTUNITY
- LARGE PARKING LOT
- ANCHORED BY TREJO'S COFFEE & DONUTS
- INCREASINGLY DENSE, RAPIDLY GROWING NEIGHBORHOOD
- CLOSE TO NEW RESTAURANTS, HOTELS, AND POPULAR HOT SPOTS

PROPERTY DETAILS

- SIZE: 8,742 SF TOTAL
- PRICE: \$6/SF/MONTH NNN
- SPACE SIZING FLEXIBLE



PROPERTY OVERVIEW



HIGHLAND AVE

SANTA MONICA BLVD

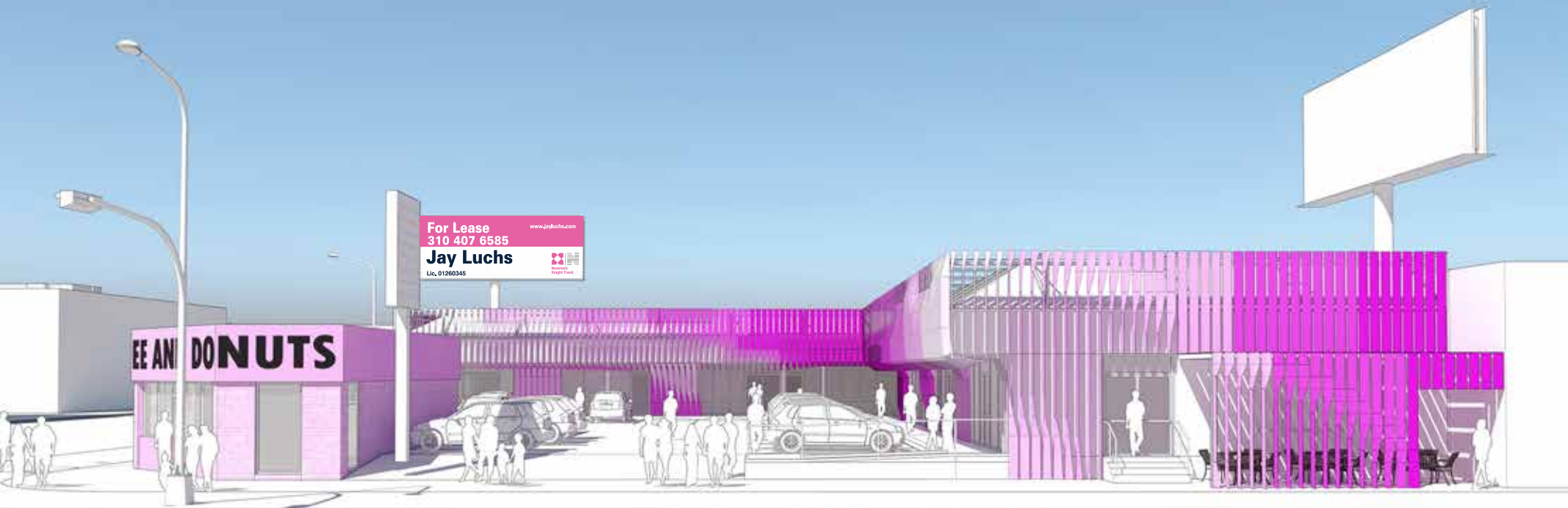
PROJECT SITE



NEIGHBORHOOD OVERVIEW



SANTA MONICA & HIGHLAND HOLLYWOOD, CA 90038



JAY LUCHS
VICE CHAIRMAN
310.407.6585
JAY.LUCHS@NGKF.COM
CA RE LIC: 01260345

GENNY CHANG
DIRECTOR
310.407.6588
GENNY.CHANG@NGKF.COM
CA RE LIC: 01467375

 **Newmark
Knight Frank**
WWW.JAYLUCHS.COM

1875 CENTURY PARK EAST SUITE 1380
LOS ANGELES, CA 90067