

MALIBU SANDS CENTER

22333 PACIFIC COAST HIGHWAY, MALIBU



RETAIL • OFFICE OPPORTUNITIES

JAY LUCHS

VICE CHAIRMAN
T. 310.407.6585
LIC. 01260345
JAY.LUCHS@NGKF.COM

CARINE MAMANN

SENIOR DIRECTOR
T. 310.595.2235
LIC. 01734150
CARINE.MAMANN@CUSHWAKE.COM

KAZUKO Y. MORGAN

VICE CHAIRMAN
T. 415.773.3546
LIC. 01070005
KAZUKO.MORGAN@CUSHWAKE.COM





**MALIBU SANDS CENTER
IS AN UPSCALE RETAIL CENTER
FEATURING NEWLY RENOVATED SPACES
ON THE HIGHLY TRAFFICKED PACIFIC COAST HIGHWAY.**

PREMISES

SITE PLANS

GROUND FLOOR

APPROXIMATELY ±1,045 - 2,225* SF

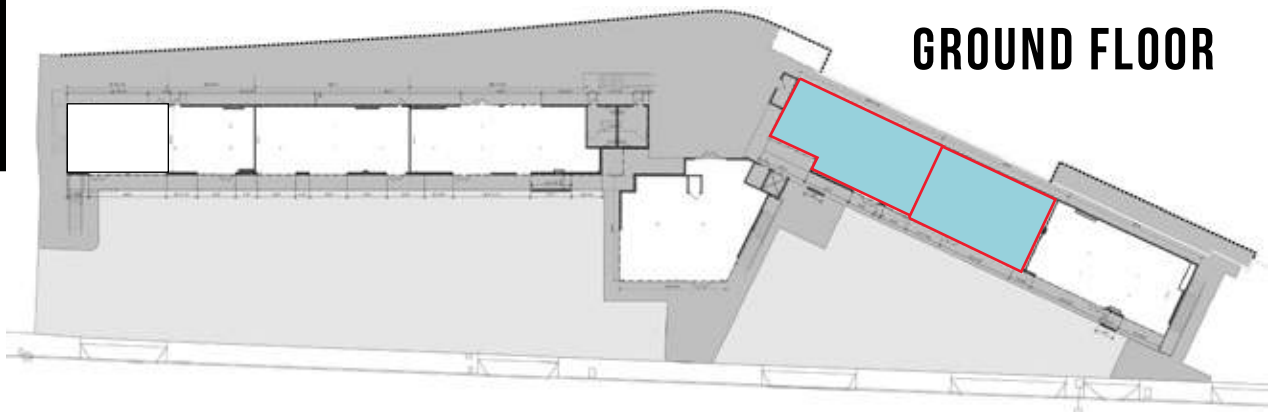
SECOND FLOOR

APPROXIMATELY ±538 - 2,735* SF

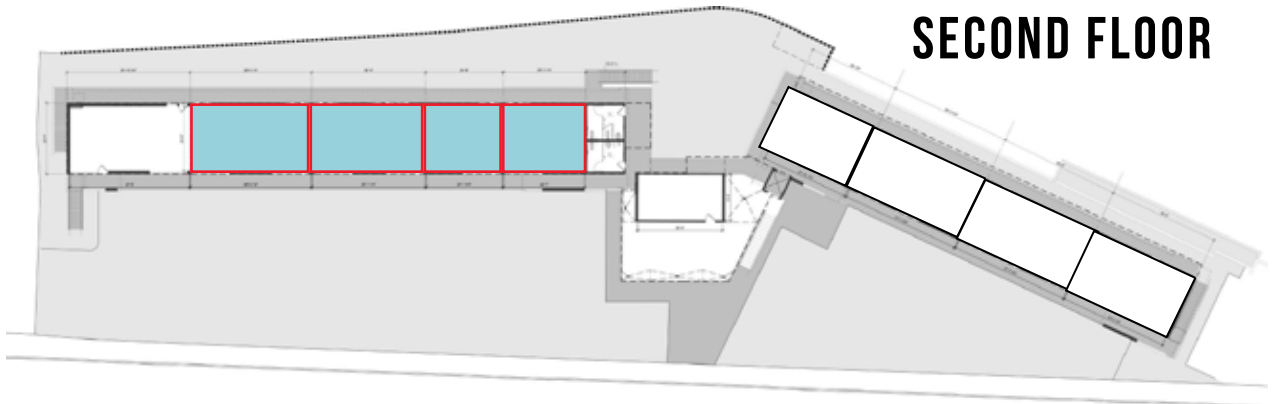
*SUITES CAN BE COMBINED

AVAILABLE IMMEDIATELY
ON-SITE PARKING

Located directly on the Pacific Coast Highway, this newly renovated two-story property offers excellent exposure to approximately 44,000 vehicles passing daily. There is existing monument signage, 44 on-site parking spaces, and a traffic light at the parking entry allowing for easy access to the Center.



PACIFIC COAST HIGHWAY



AVAILABLE

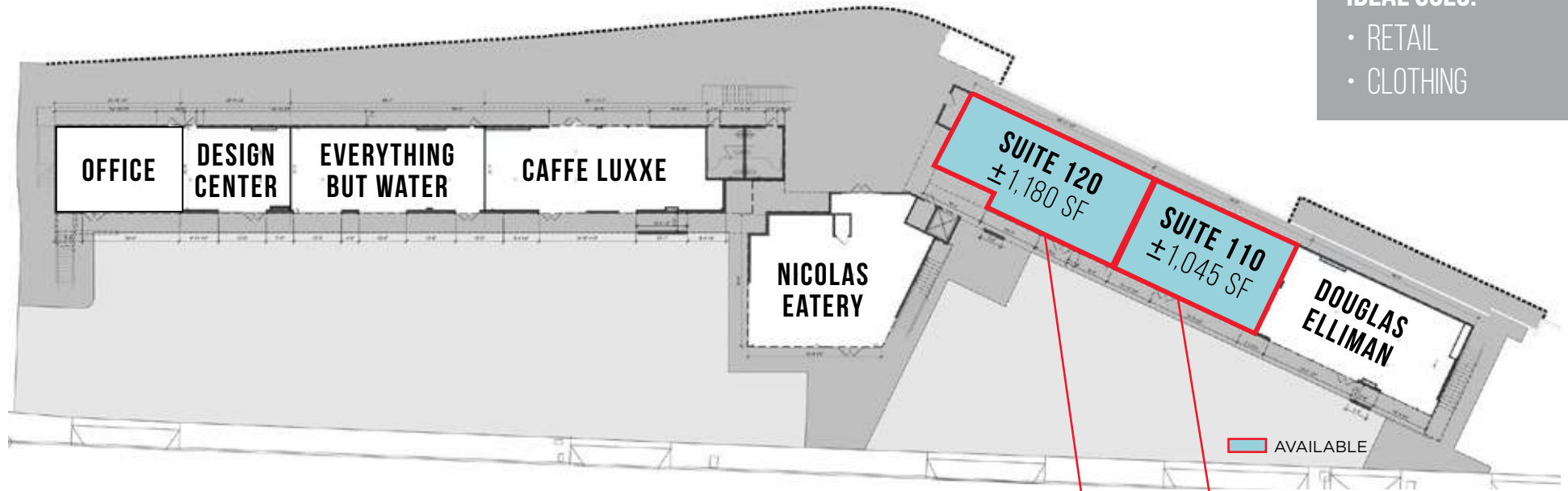


SITE PLANS

SUITES 110 & 120

IDEAL USES:

- RETAIL
- CLOTHING



GROUND FLOOR

SITE PLANS

SUITES 240-255

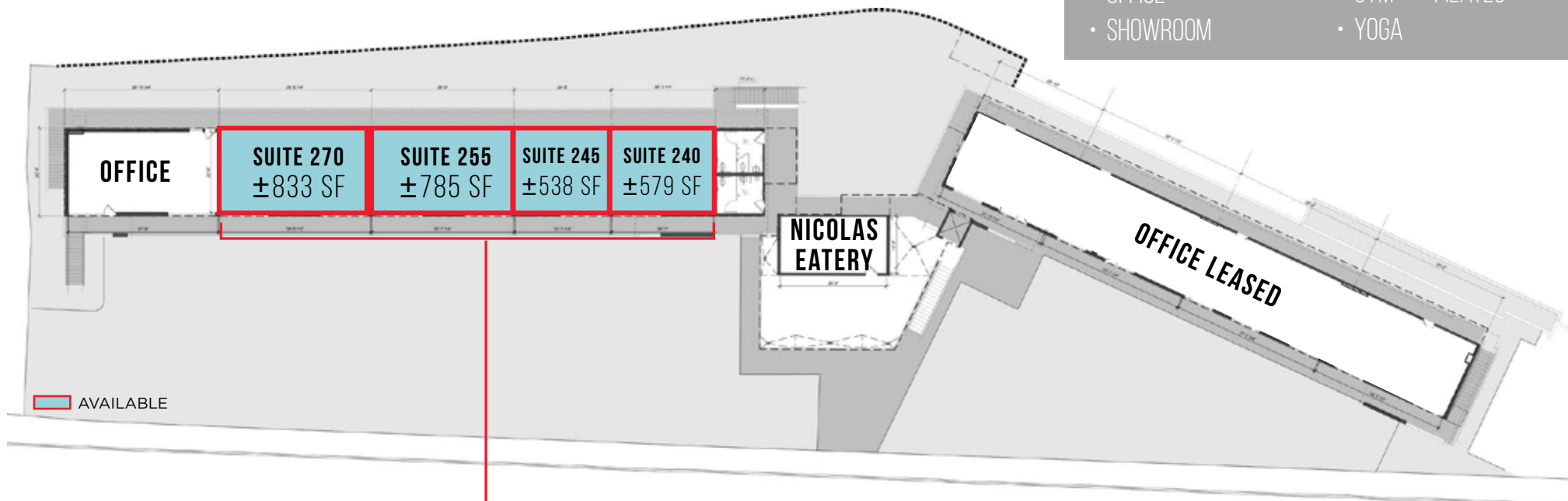
IDEAL USES:

- OFFICE
- SHOWROOM

SUITE 270

IDEAL USES:

- GYM
- PILATES
- YOGA



SECOND FLOOR

MALIBU SANDS CENTER

RETAIL • OFFICE OPPORTUNITIES



JAY LUCHS
VICE CHAIRMAN
T. 310.407.6585
LIC. 01260345
JAY.LUCHS@NGKF.COM

CARINE MAMANN
SENIOR DIRECTOR
T. 310.595.2235
LIC. 01734150
CARINE.MAMANN@CUSHWAKE.COM

KAZUKO Y. MORGAN
VICE CHAIRMAN
T. 415.773.3546
LIC. 01070005
KAZUKO.MORGAN@CUSHWAKE.COM

