



# 9004 MELROSE WEST HOLLYWOOD

**CARINE MAMANN**

Senior Director  
T. 310.595.2235  
Lic. 01734150  
[carine.mamann@cushwake.com](mailto:carine.mamann@cushwake.com)

**KAZUKO Y. MORGAN**

Vice Chairman  
T. 415.773.3546  
Lic. 01070005  
[kazuko.morgan@cushwake.com](mailto:kazuko.morgan@cushwake.com)

**JAY LUCHS**

Vice Chairman  
Lic. 01260345  
T. 310.407.6585  
[jay.luchs@ngkf.com](mailto:jay.luchs@ngkf.com)

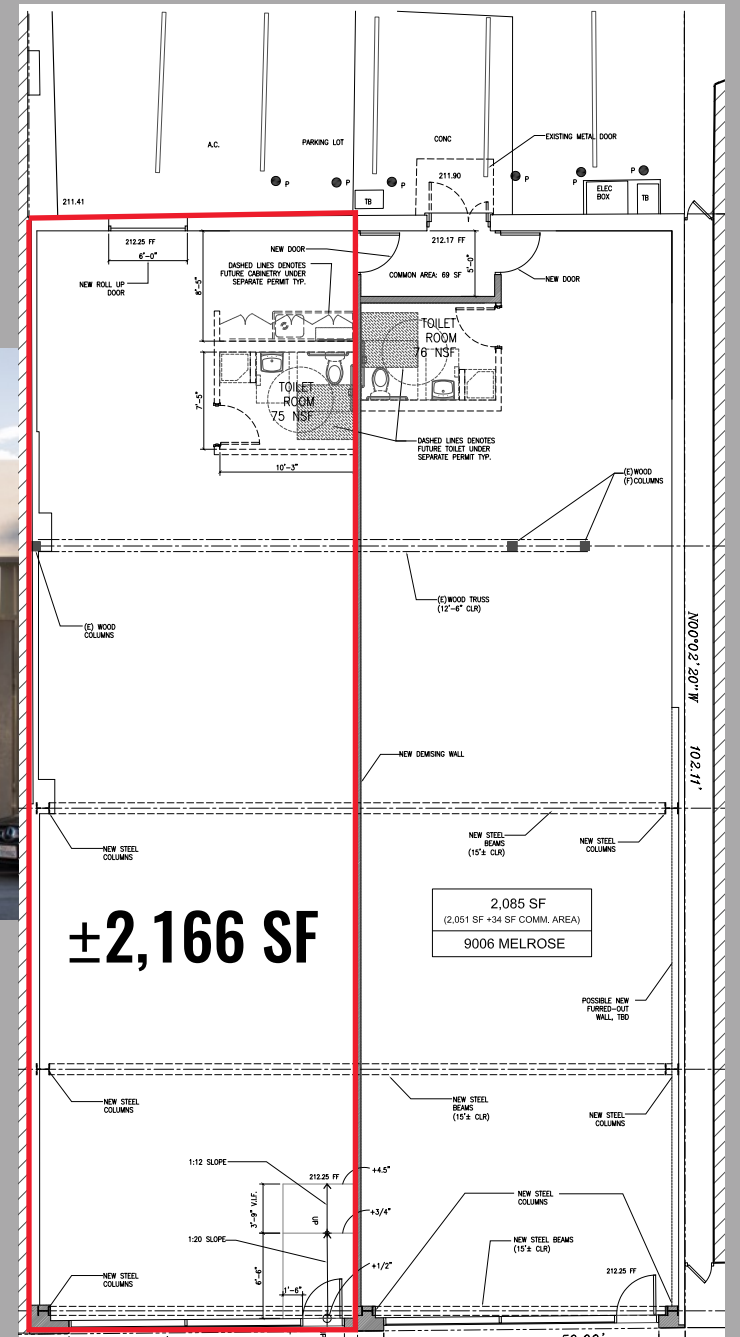


**9004 MELROSE AVENUE** IS A NEW DEVELOPMENT LOCATED ON THE COOLEST CORRIDOR IN WEST HOLLYWOOD. THIS PROMINENT LOCATION OFFERS EXCELLENT EXPOSURE ALONG MELROSE AVENUE IN ADDITION TO AMPLE STREET PARKING AND HIGH CEILINGS.



- ± 18' Foot Ceiling Height
- ± 25' Feet of Frontage on Melrose Avenue
- 1 Parking Space Included
- Available Immediately

# PREMISES





**MELROSE AVENUE** IS ONE OF THE HOTTEST RETAIL LOCATIONS IN WEST HOLLYWOOD. THIS MAJOR SHOPPING AND DINING DESTINATION IS HOME TO RETAILERS SUCH AS JAMES PERSE, MAXFIELD, PRETTY LITTLE THING, RESTORATION HARDWARE, NIKE BY MELROSE, ZADIG & VOLTAIRE, AND THE REAL REAL. FAMOUS RESTAURANTS ON MELROSE INCLUDE GRACIAS MADRE AND CELEBRITY FAVORITES CRAIG'S, CATCH LA, URTH CAFFE, AND ALFRED COFFEE.

# LOCATION

9014		9011	
9010		9009	
9006		9007	
9004	<b>FOR LEASE</b>	9005	
9002		9003	
		9001	

## Almont Drive

8920	Acne Studios <small>GEORGE STERN FINE ARTS Specializing in Baby Carriers, Art &amp; More</small>	8925	<b>VERVE</b> <small>COFFEE ROASTERS</small>
8914	<b>JAMES PERSE</b>	8917	Effrey Dry Cleaners
8910	<b>BENJAMIN SELECTS</b>	8905	<b>GRACIAS MADRE</b>
8908	<i>maxfield</i>	8901	Leonard's Cleaners
8906	<i>maxfield</i>		
8900	<b>DECORATIVE</b> <small>LAVANDE</small>		
8826	<i>Craig's</i>		
8818	<i>maxfield</i> ADAPTATION		
8816	eskandar		
8810			
8808	<b>HELMUT LANG</b>		
8800	john varvatos	8807	<b>VCA</b> Miller Robertson Animal Hospital

## La Peer Drive

8825	<i>maxfield</i>
8807	<b>VCA</b> Miller Robertson Animal Hospital

## Robertson Boulevard

8764	<b>CECCONI'S</b> West Hollywood	600 N. Robertson	
8750	<b>WALKER ZANGER</b>	Public Parking	
8748		8755	
8748	mlkstudio	8751	
8746	Richard Mulligan	8747	<b>NANCY CORZINE</b>
8744	<i>Caché</i>	8737	<b>J. ROBERT SCOTT</b>
8738	<b>ANNE HAUCK ART DECO</b>	8735	<b>COUNTRY FLOORS</b>
8734	<b>FORMATIONS</b>	8731	<b>MENTON-SPIDELL</b>
8720	Dennis & Leon	8727	<b>RUG</b> CONCEPTS
8710	Kieth H McCoy & Associates	8715	ROOFTOP
8700	<b>VIRGINIA BLACK</b>	8715	2ND FLOOR & OFFICE SPACE SHOWROOM
		8711	<b>EDANISTA</b>
		8711	<b>THE BATH</b>
		8711	FUTURE



Acne Studios



JAMES PERSE



KIMPTON  
*la peer hotel*  
WEST HOLLYWOOD



*manfield*



john varvatos



*Craig's*



  
CATCH



VERVE  
COFFEE ROASTERS

# NEIGHBORING TENANTS



# 9004 MELROSE WEST HOLLYWOOD

**CARINE MAMANN**

Senior Director  
T. 310.595.2235  
Lic. 01734150  
[carine.mamann@cushwake.com](mailto:carine.mamann@cushwake.com)

**KAZUKO Y. MORGAN**

Vice Chairman  
T. 415.773.3546  
Lic. 01070005  
[kazuko.morgan@cushwake.com](mailto:kazuko.morgan@cushwake.com)

**JAY LUCHS**

Vice Chairman  
Lic. 01260345  
T. 310.407.6585  
[jay.luchs@ngkf.com](mailto:jay.luchs@ngkf.com)

