



WEST HOLLYWOOD, CALIFORNIA

**8801** SUNSET BLVD

**JAY LUCHS** Vice Chairman  
CA RE Lic #01260345



**NEWMARK KNIGHT FRANK**  
1875 Century Park East, Suite 1380, Los Angeles, CA 90067



[jay.luchs@ngkf.com](mailto:jay.luchs@ngkf.com)

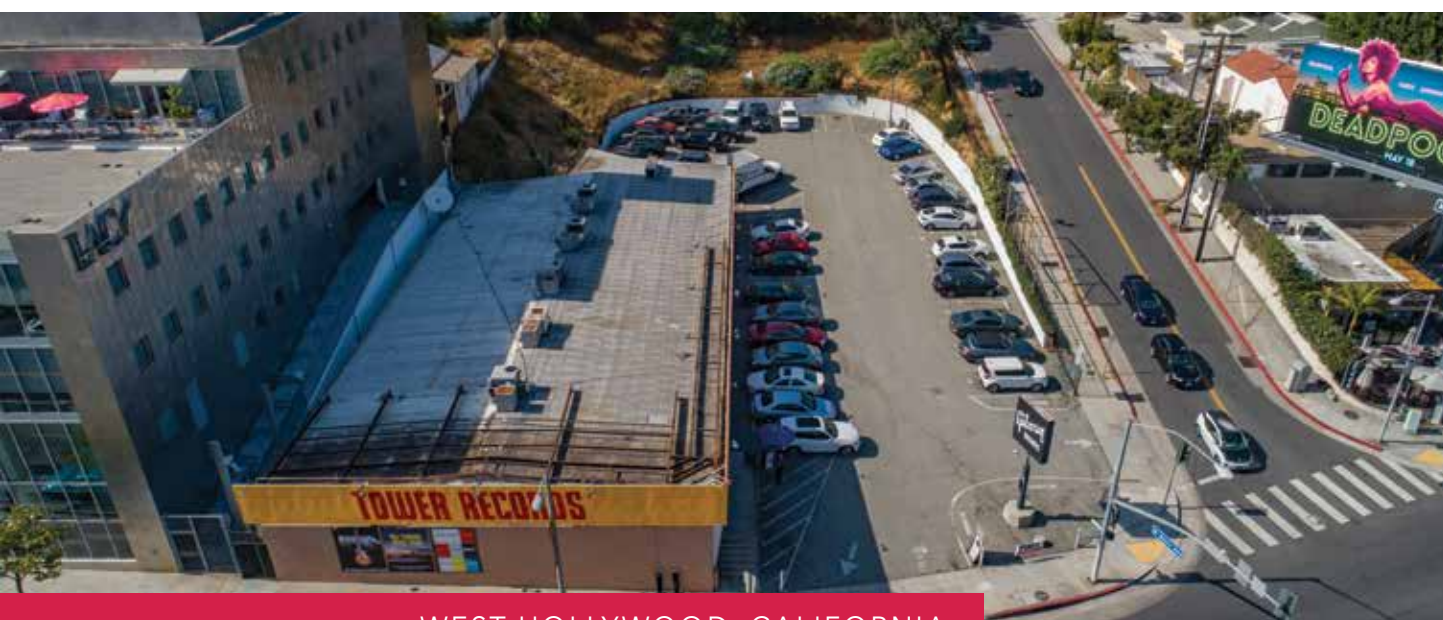


310.407.6585



[WWW.JAYLUCHS.COM](http://WWW.JAYLUCHS.COM)

**Newmark  
Knight Frank**



WEST HOLLYWOOD, CALIFORNIA

**8801** SUNSET BLVD

- » Former Tower Records
- » Price Available upon Request
- » Approximately 8,700 sf on a ±34,570 sf lot on the corner of Sunset Boulevard and Horn Avenue
- » 40 on-site parking spaces

**JAY LUCHS** Vice Chairman  
CA RE Lic #01260345

 **NEWMARK KNIGHT FRANK**  
1875 Century Park East, Suite 1380, Los Angeles, CA 90067  
jay.luchs@ngkf.com  
310.407.6585  
 [WWW.JAYLUCHS.COM](http://WWW.JAYLUCHS.COM)  **Newmark Knight Frank**



WEST FACING AERIAL

# 8801 SUNSET BLVD

8801 SUNSET BLVD

**JAY LUCHS**

Vice Chairman  
CA RE Lic #01260345



**NEWMARK KNIGHT FRANK**

1875 Century Park East, Suite 1380, Los Angeles, CA 90067

[jay.luchs@ngkf.com](mailto:jay.luchs@ngkf.com)



310.407.6585



[WWW.JAYLUCHS.COM](http://WWW.JAYLUCHS.COM)



**Newmark  
Knight Frank**



The Comedy Store  
Katana Robata  
Burgerim and Pink Dot

Burger Lounge

Mel's Drive-In, Drybar West Hollywood,  
Blushington, and Wahlburgers

HUGO Store  
The Butcher, The Baker,  
The Cappuccino Maker

Mondrian Los Angeles

Equinox, Earthbar,  
H&M, TAGS, SoulCycle,  
and EYSOM

Obica Sunset Plaza  
Oliver Peoples  
le Petit Four

Wildfox

Tocaya Organica

HORN AVENUE

SUNSET BOULEVARD

HOLLOWAY DRIVE

The Coffee Bean & Tea Leaf

8801 SUNSET BLVD

State Social House

Estrella

WEST HOLLYWOOD, CALIFORNIA

# 8801 SUNSET BLVD

**JAY LUCHS**

Vice Chairman  
CA RE Lic #01260345



**NEWMARK KNIGHT FRANK**

1875 Century Park East, Suite 1380, Los Angeles, CA 90067

[jay.luchs@ngkf.com](mailto:jay.luchs@ngkf.com)

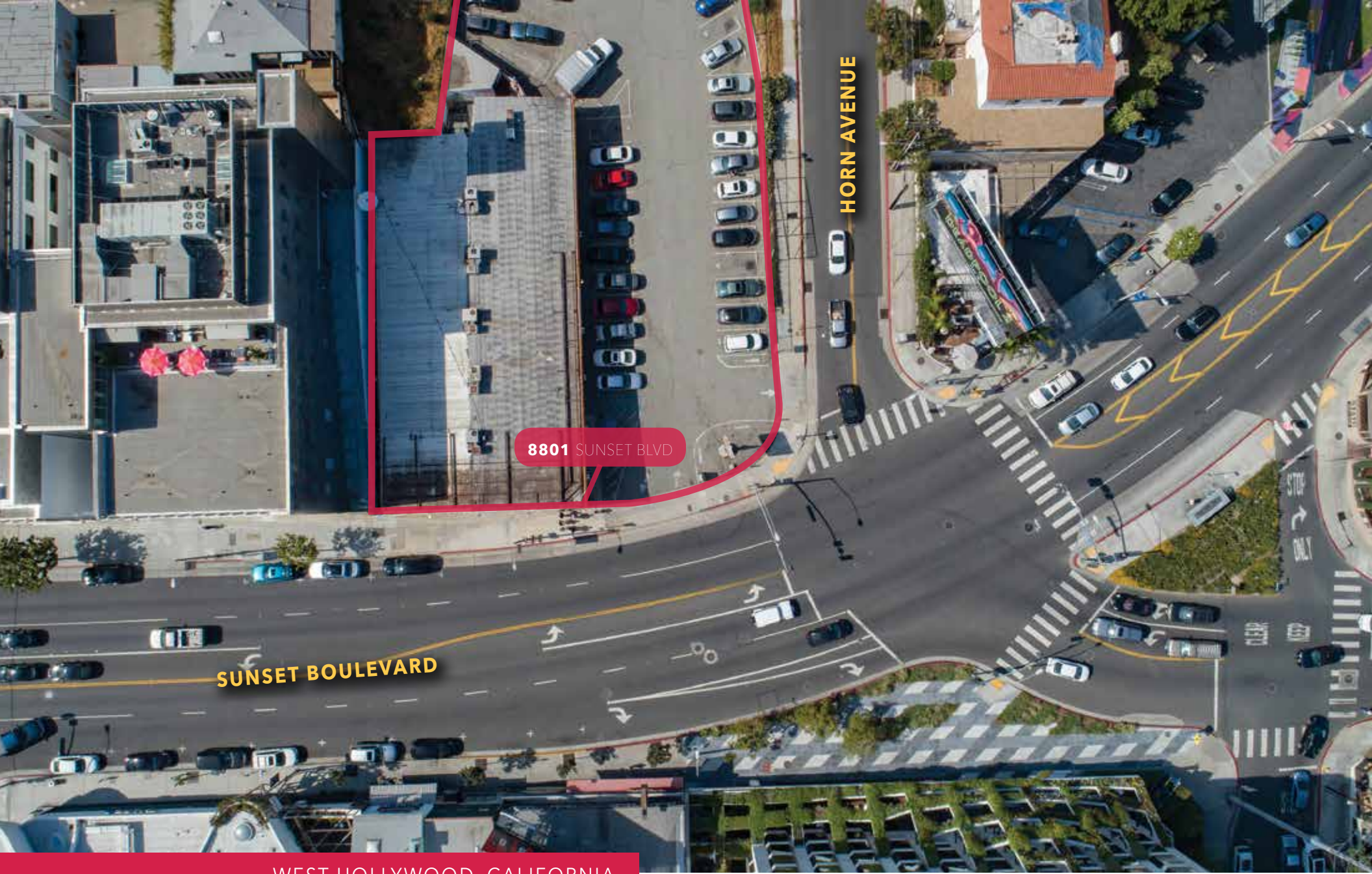
310.407.6585



[WWW.JAYLUCHS.COM](http://WWW.JAYLUCHS.COM)



**Newmark  
Knight Frank**



WEST HOLLYWOOD, CALIFORNIA

# 8801 SUNSET BLVD

**JAY LUCHS** Vice Chairman  
CA RE Lic #01260345

 **NEWMARK KNIGHT FRANK**  
1875 Century Park East, Suite 1380, Los Angeles, CA 90067  
jay.luchs@ngkf.com  
310.407.6585  
[WWW.JAYLUCHS.COM](http://WWW.JAYLUCHS.COM)

