

# 8451 MELROSE AVENUE



## EXCLUSIVE LISTING | RETAIL SPACE FOR LEASE

**PREMISES:** 8451 Melrose Avenue, Los Angeles, CA 90048

**SIZE:** Approximately 10,000 SF on two levels

**RENT:** \$65,000 per month NNN

**AVAILABILITY:** Landlord renovating to deliver in vanilla shell condition

**PARKING:** Rare large rear gated parking lot. Alley backs up to Melrose Place's alley where back entrance to Chloe, Oscar de la Renta, Isabel Marant, John Frieda Salon, Marni and others are located

**NEIGHBORING TENANTS:** Marc Jacobs, APC, Baldwin, Outdoor Voices, Joie, Serena + Lily, Theory, Kelly Wearstler, House of CB, Reebok Crossfit Lab, Farrow & Ball, Lucques, Ago, Rosaline



[WWW.JAYLUCHS.COM](http://WWW.JAYLUCHS.COM)

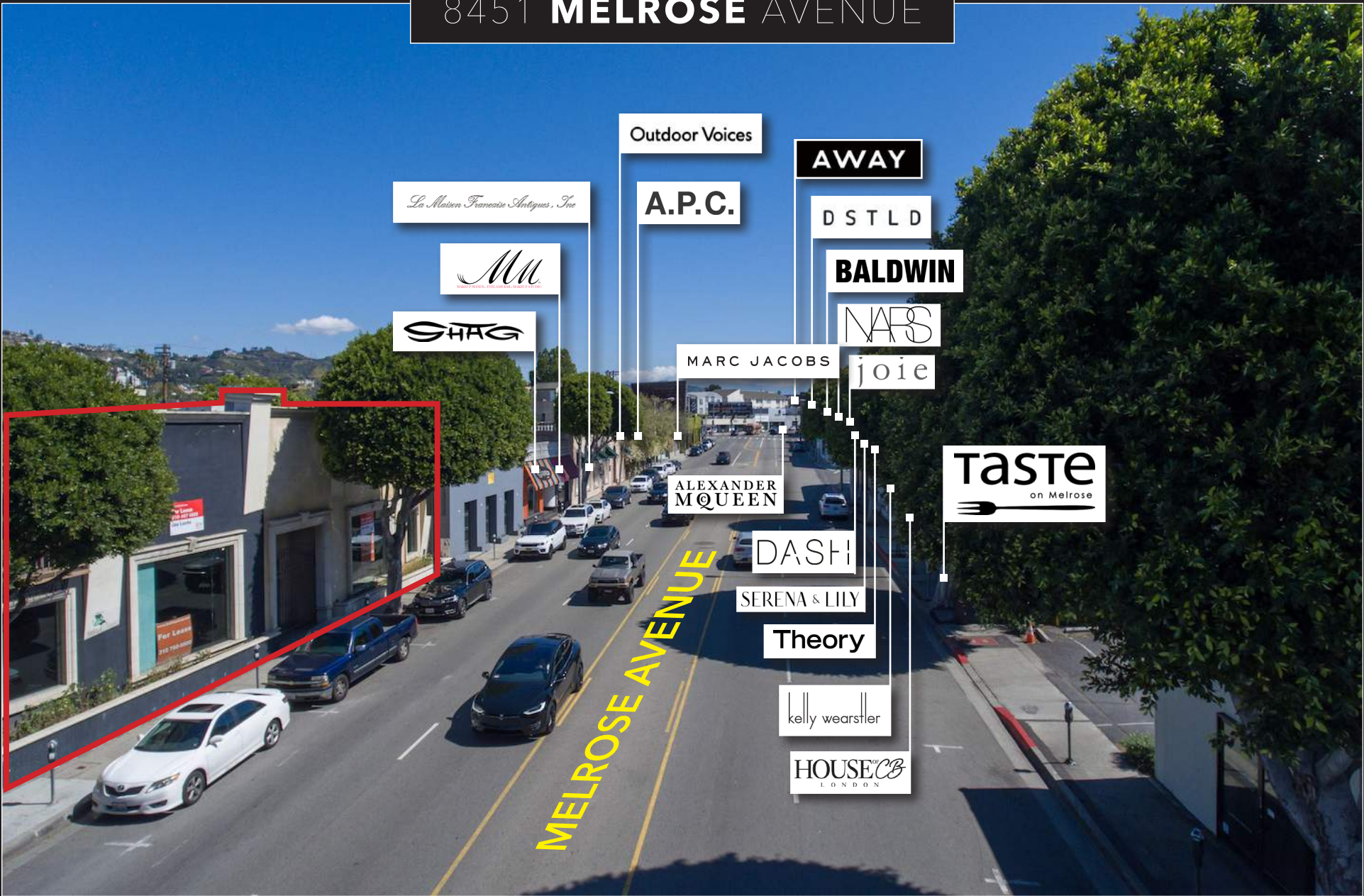
### JAY LUCHS

Vice Chairman | 310.407.6585  
jay.luchs@ngkf.com | CA RE Lic #01260345

### NEWMARK KNIGHT FRANK OFFICE:

1875 CENTURY PARK EAST | SUITE 1380 | LOS ANGELES | CA | 90067

# 8451 MELROSE AVENUE



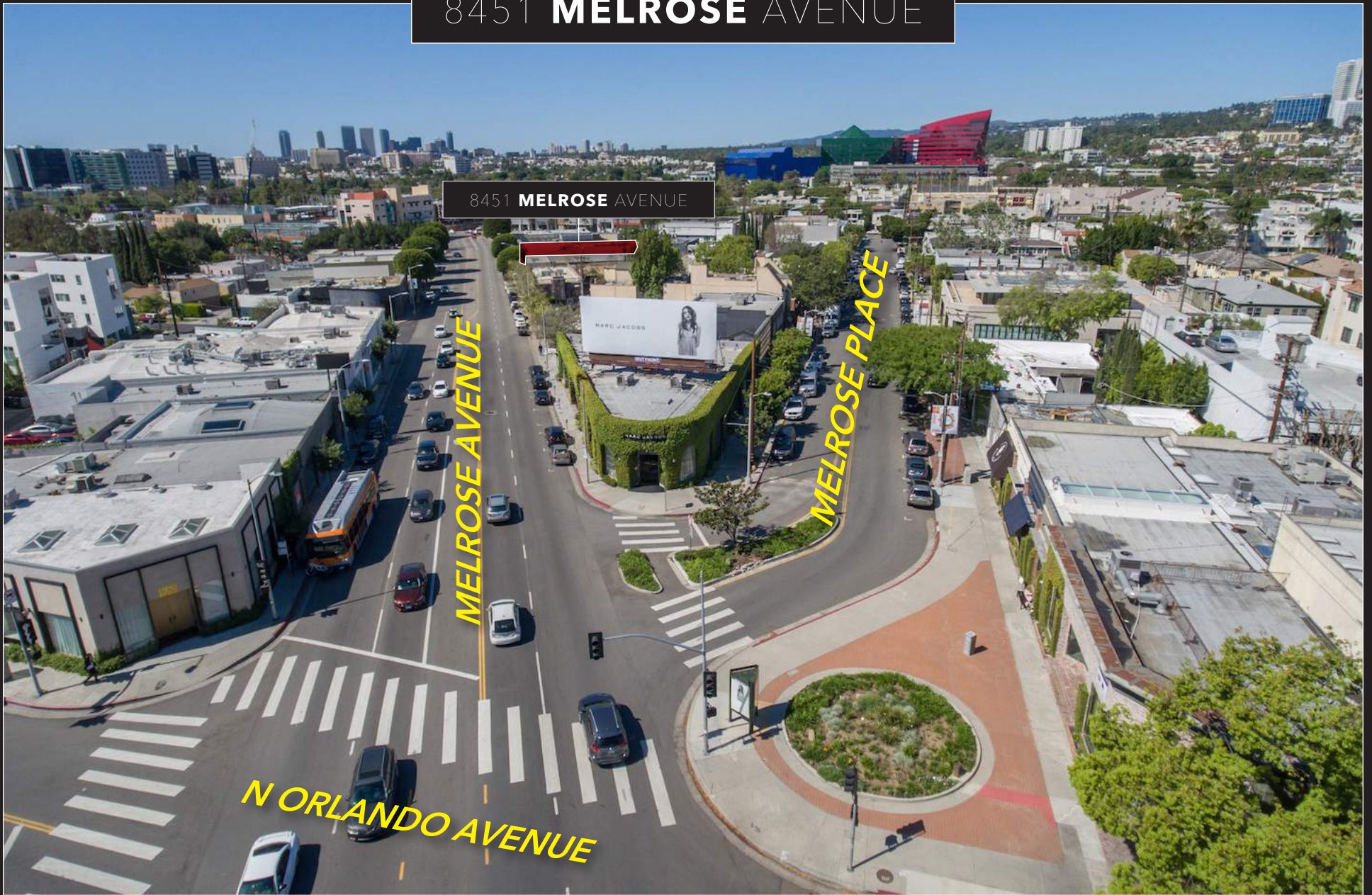
WWW.JAYLUCHS.COM

**JAY LUCHS**  
Vice Chairman | 310.407.6585  
jay.luchs@ngkf.com | CA RE Lic #01260345

**NEWMARK KNIGHT FRANK OFFICE:**  
1875 CENTURY PARK EAST | SUITE 1380 | LOS ANGELES | CA | 90067



# 8451 MELROSE AVENUE



8451 MELROSE AVENUE



[WWW.JAYLUCHS.COM](http://WWW.JAYLUCHS.COM)

**JAY LUCHS**

Vice Chairman | 310.407.6585  
jay.luchs@ngkf.com | CA RE Lic #01260345

**NEWMARK KNIGHT FRANK OFFICE:**

1875 CENTURY PARK EAST | SUITE 1380 | LOS ANGELES | CA | 90067