

238 N. CANON DRIVE

RESTAURANT SPACE AVAILABLE



238 N. CANON DRIVE

RESTAURANT SPACE AVAILABLE

(RETAIL POTENTIAL)



SIZE

±6,000 RSF Ground
±1,600 RSF Second
±3,500 RSF Penthouse
±1,000 RSF Patio*

CEILING HEIGHTS

23' & 13' Ground
10' Second
18' Penthouse

DELIVERY

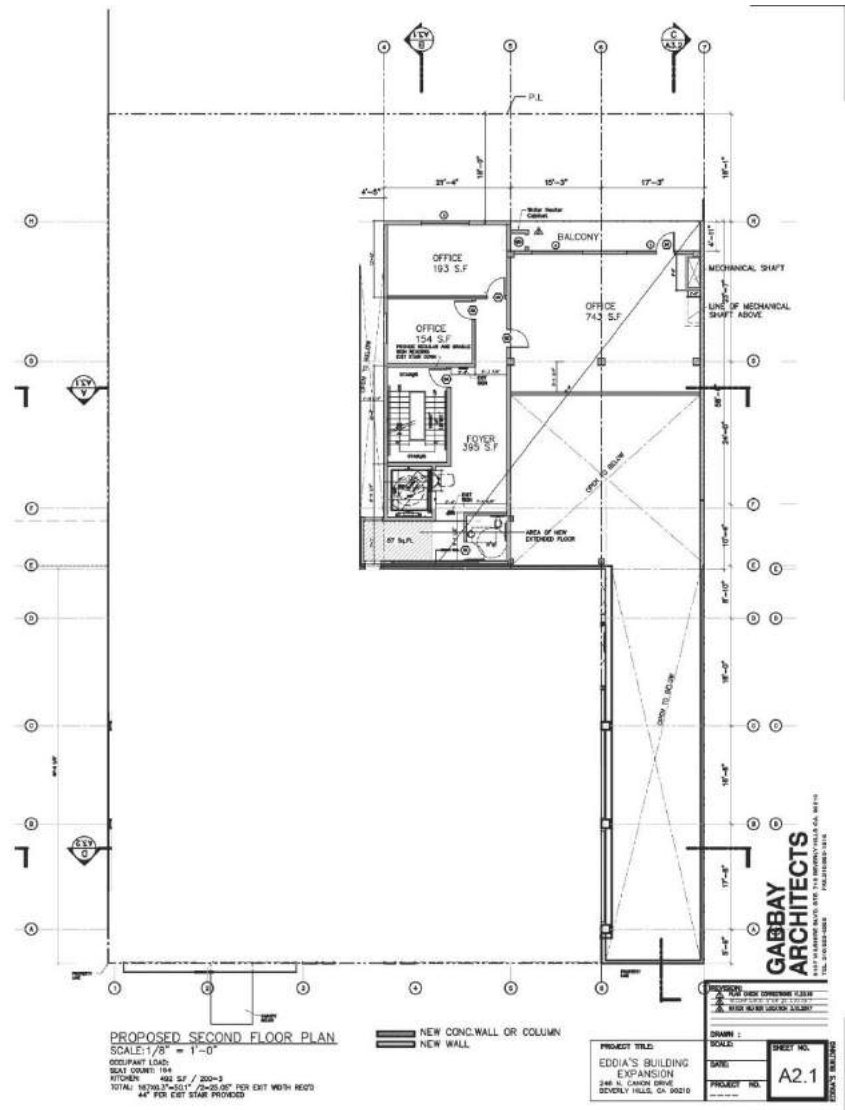
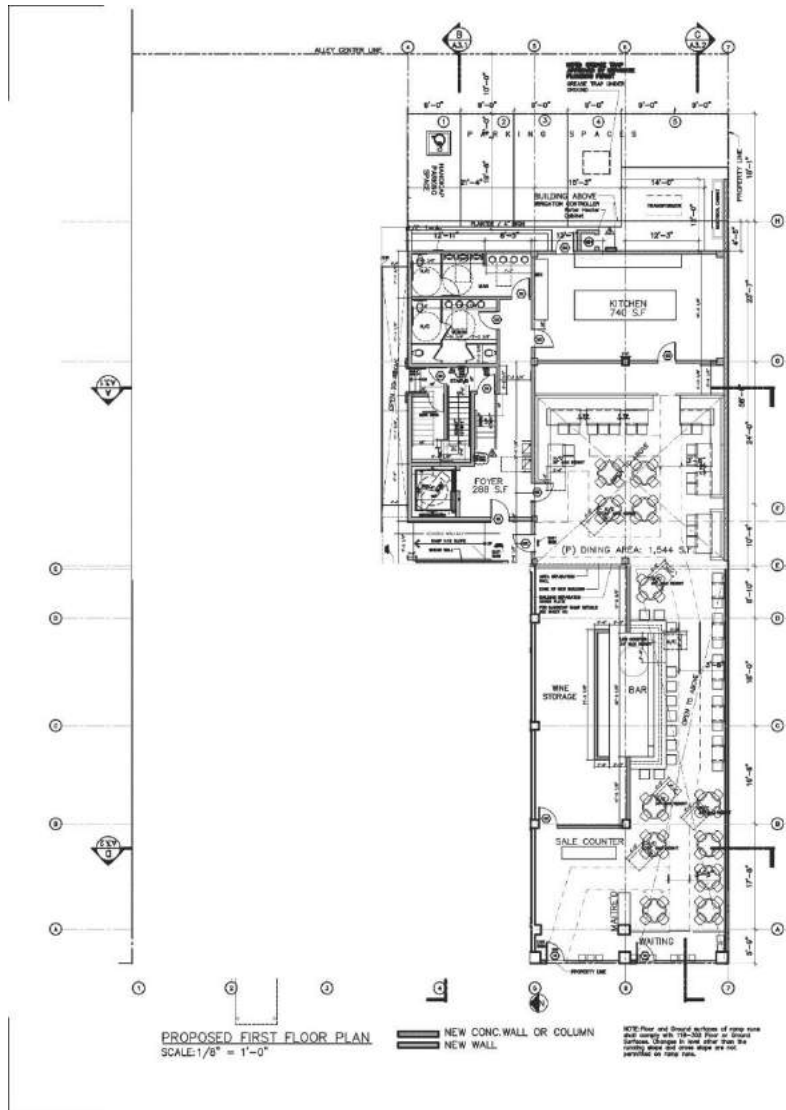
4Q 2017
Restaurant shell with utilities
designed for a high-performing
restaurant

PRICE

Available upon request

*City approvals must be received for dining
use on the Patio

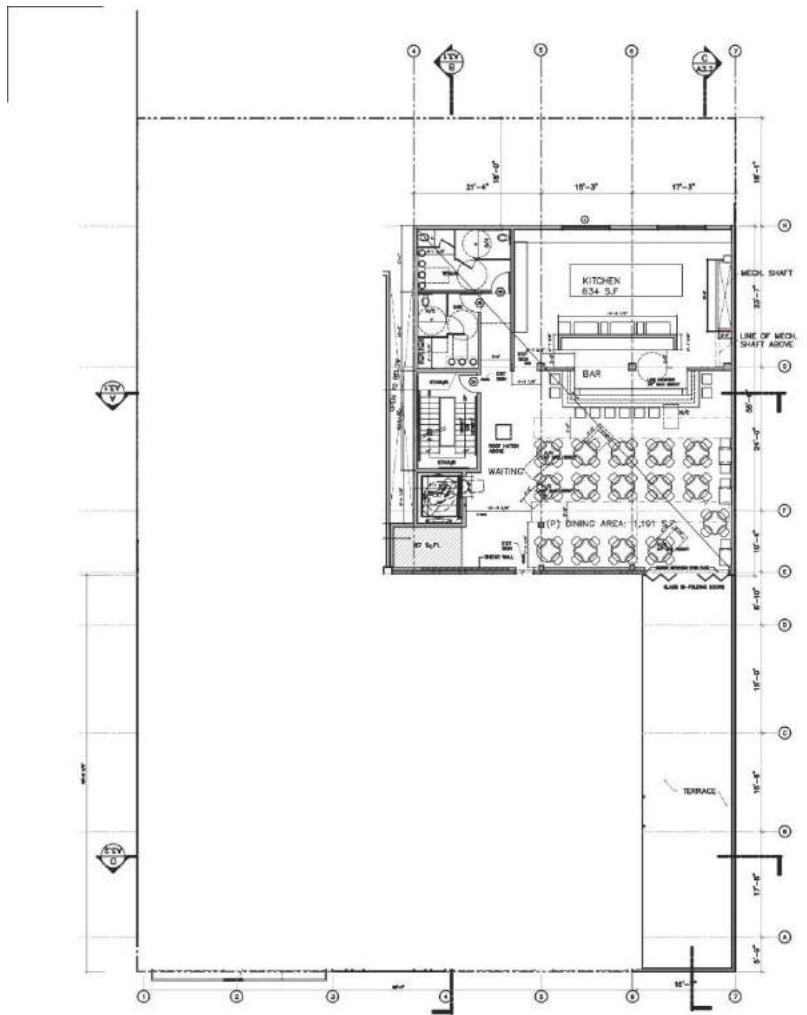
238 N. CANON DRIVE



PROJECT TITLE:	DRINK:	SHEET NO.:
EDDIA'S BUILDING EXPANSION	SCALE:	A2.1
238 N. CANON DRIVE SEVERLY HILLS, CA 90210	PROJECT NO.:	

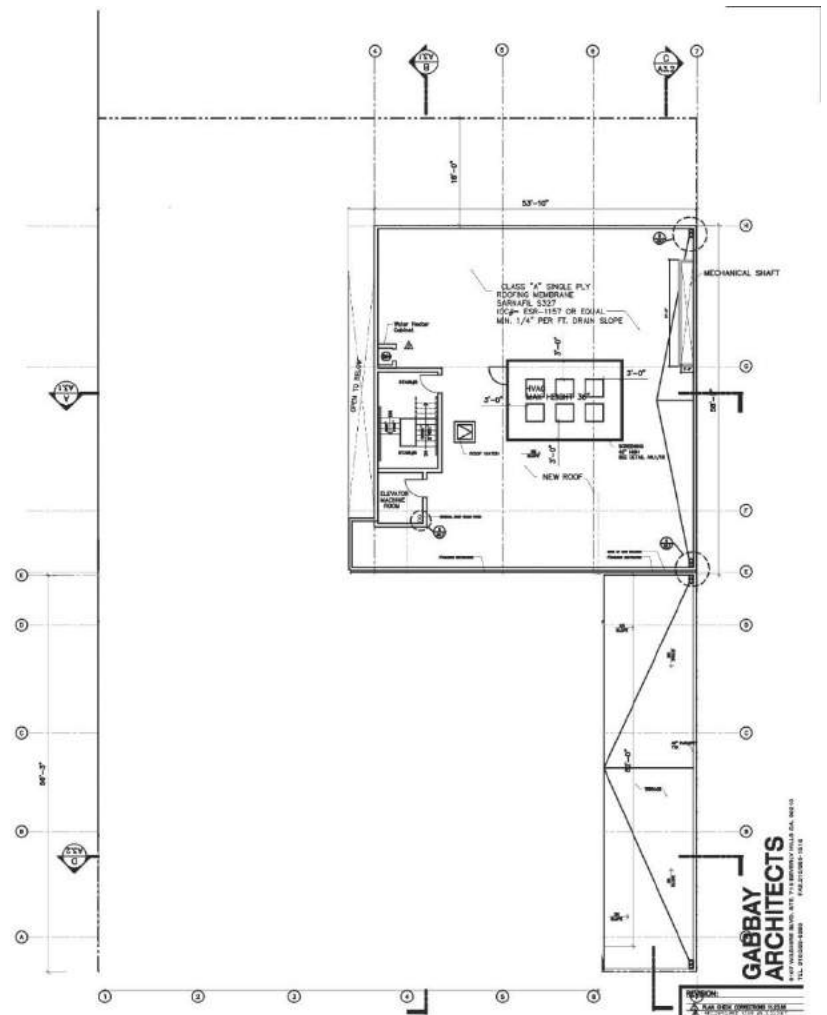
GABBAY ARCHITECTS
1100 PARKWAY DRIVE
SEVERLY HILLS, CA 90210
TEL: 310.407.7444 FAX: 310.407.7444

238 N. CANON DRIVE



PROPOSED THIRD FLOOR PLAN
 SCALE: 1/8" = 1'-0"
 OCCUPANT LOAD:
 SEAT COUNTS: 208
 KITCHEN: 1,200 SF / 200-3
 TOTAL: 2100.00 S.F. / 20-25.4' PER EXT
 NET H. HEAD
 44' PER EXT STAIR PROVIDED

NEW CONC. WALL OR COLUMN
 NEW WALL



PROPOSED ROOF PLAN
 SCALE: 1/8" = 1'-0"

PROJECT TITLE: EDDIA'S BUILDING EXPANSION 248 N. CANON DRIVE BEVERLY HILLS, CA 90220	DATE: 1/17/2017	SHEET NO. A2.2
--------------------------------------------------------------------------------------------------	--------------------	-------------------

GABBAY ARCHITECTS
 1144 WESTWOOD BLVD., SUITE 100
 BEVERLY HILLS, CA 90210
 TEL: 310.274.8888 FAX: 310.274.1414

238 N. CANON DRIVE

N SANTA MONICA BOULEVARD	LUCAS STREET HWP	N SANTA MONICA BOULEVARD
Medical Building	499	9390 The Wallis Annenberg Center for the Performing Arts
Verdigo		S SANTA MONICA BOULEVARD
S SANTA MONICA BOULEVARD		
Heritage	487	460 Valorie
Helen Ficalora	481	454 Il Tramazzino
Chrome Make Up	459	454 DryBar
Hiroshi Hair	457	450 Yoshi Hair
Tatal	453	444 Edwodes Chocolates
Offices	451	442 Selfish
Thibiant Day Spa	449	440 Alchemy 43
PARKING STRUCTURE		434 La Scala
Welly's Wines	447	432 Leggiadro
Wolfgang's Steakhouse	445	430 Olive & June
Keller Williams	439	424 Porta Via
The Courtyard	427	419 Umberto Saloni
Carroll & Co	426	410 Shiki
Cafe Gratitude	419	410 Il Pastizio
Avedon	417	
Louis Michael	413	
Optics by Victor	411	
Harry Harris Shoes	409	
American Tea Room	401	
BRIGHTON WAY		BRIGHTON WAY
Garfield Pharmacy		370 Ato Yoga
e. baldi	375	368 Beverly Hills Beauty Center & Supply
James Perse	357	362 XIAN
Nelson Shelton Real Estate	356	350 Alan Friedman Jewelry
Joseph Martin	351	350 Caffo Roma
Mulberry Street Pizza	347	350 Luomo la Donna
Rosano Ferretti	345	350 Moda Italia
Redevelopment Project	341	350 90210 Wine + Spirits
Wendy Harrison	339	350 Giuseppe Franco
Jackmond	338	350 Lease 310-273-7858
Le Mervelly	319	350 Rigatti
Maxfield Bleu	301	342 Hologram LISA
		340 Cannon Club
		338 Filmon.tv/Salon 60210
Village on Canon	301	300 Rite Aid
Via Alloro	301	320 Physique 57
DAYTON WAY		DAYTON WAY
Blown	275	270 Obagi
Nest Seekers	271	250 Hilton & Hyland
The Palm	281	246 Mastro's Steakhouse
Parking Structure, office lease	257	232 Sands & Associates
Bouchon	235	228 Leased
Bar Bouchon	235	224 Luxurator
Sweet Bovarly	240	222 Barnes International Realty
Georgie	225	220 WH
		220 Super Care Drugs
Montage Hotel	225	218 West Coast Escrow
		216 Euphonia Nail Salon
		214 Canale Hair
		212 Sugarfish
		210 Westside Estate Agency
		202 Rodeo Realty
		CLIFTON WAY
		192 Opus Baric
		190 Fred Hayman Building
		184 Citizen
Bank of the West	176	176 Spago
		176 Prive
		168 Coldwell Banker
		160 New Pacific
WILSHIRE BOULEVARD	LUCAS STREET HWP	WILSHIRE BOULEVARD

